



REPUBLIC OF ESTONIA
MINISTRY OF FINANCE

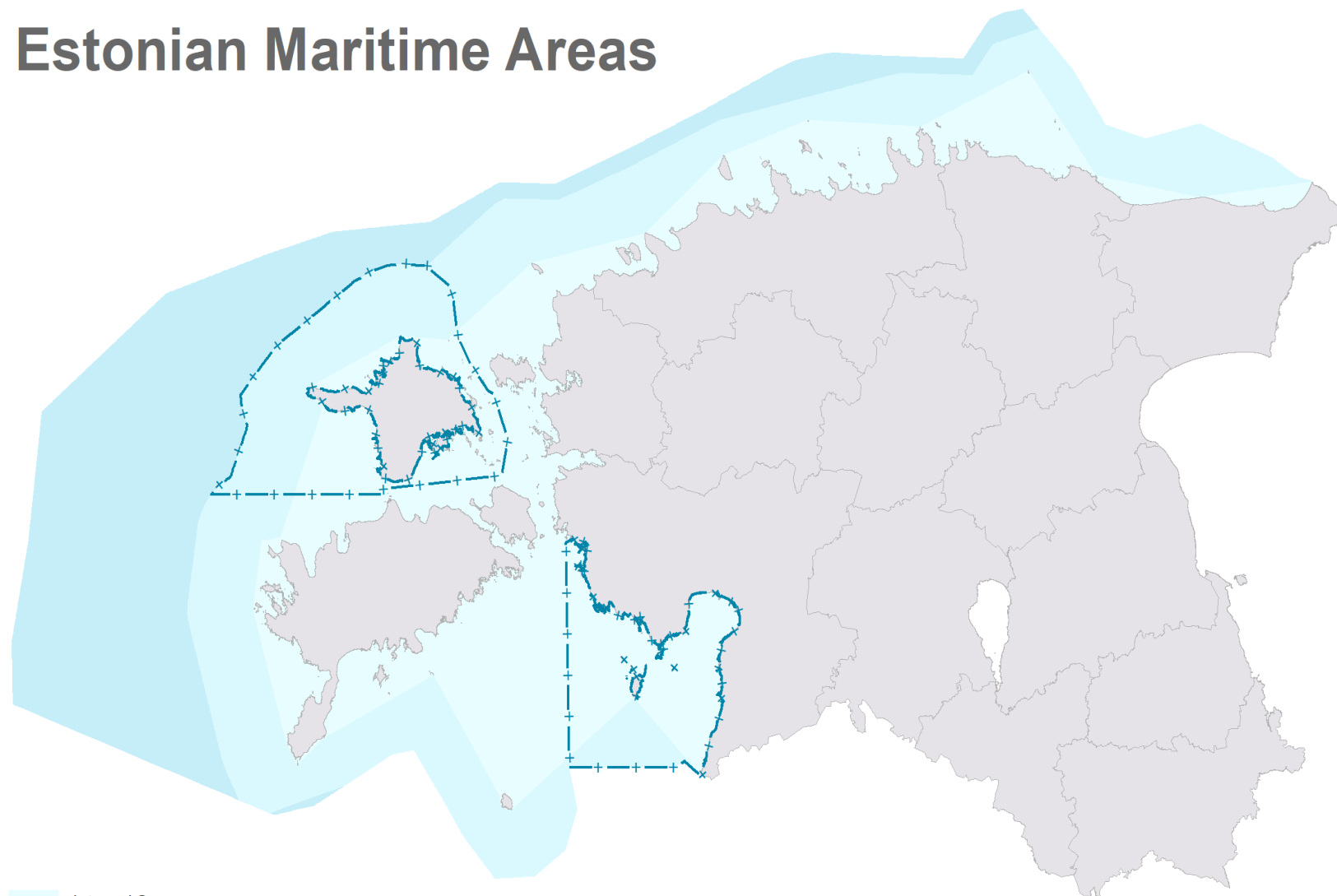
MSP in Estonia

Triin Lepland

Adviser of Spatial Planning Department

04.06.2019

Estonian Maritime Areas



- Internal Sea
- Territorial Sea
- Exclusive Economic Zone
- Hiiu and Pärnu County Maritime Spatial Plans

* Hiiu MSP was abolished by the National Court of Estonia on August 8th 2018 regarding OWE.

MSP process in Estonia

WE ARE HERE



INITIATION

BASELINE

DRAFT

PUBLIC DISPLAY
OF THE DRAFT



MAY
2017



JUNE 2017
- JUNE 2018



JULY 2018
- MARCH 2019



APRIL - JUNE
2019

PLANNING
SOLUTION AND
IMPACT
ASSESSMENT

COORDINATION

PUBLIC DISPLAY
OF THE
PLANNING
SOLUTION

ADOPTION



JULY -
OCTOBER 2019



NOVEMBER 2019 -
FEBRUARY 2020



MARCH - JULY
2020



AUGUST
2020

MSP Webpage

<http://mereala.hendrikson.ee/en.html>



RAHANDUSMINISTEERIUM



HENDRIKSON & KO



European
MSP Platform



Plan
Baltic
Scope

Home Webmap | EST ENG

Estonian maritime spatial plan

Spatial planning of Estonian maritime areas is an instrument for devising long-term sea usage.

Any human activities on sea must be based on achieving or maintaining a healthy marine environment.

Spatial planning of Estonian maritime areas addresses economic prosperity, social well-being and environmental targets at the same time and balances their respective needs.

Estonian maritime spatial plan will be the strategic basis for all decisions regulating sea usage.

Procedural information about compiling the maritime spatial plan is available on the homepage of [Estonian Ministry of Finance](#).

▶ Play video about maritime planning

▶ Timetable

Planning and impact assessment materials ▶

Webmap ▶

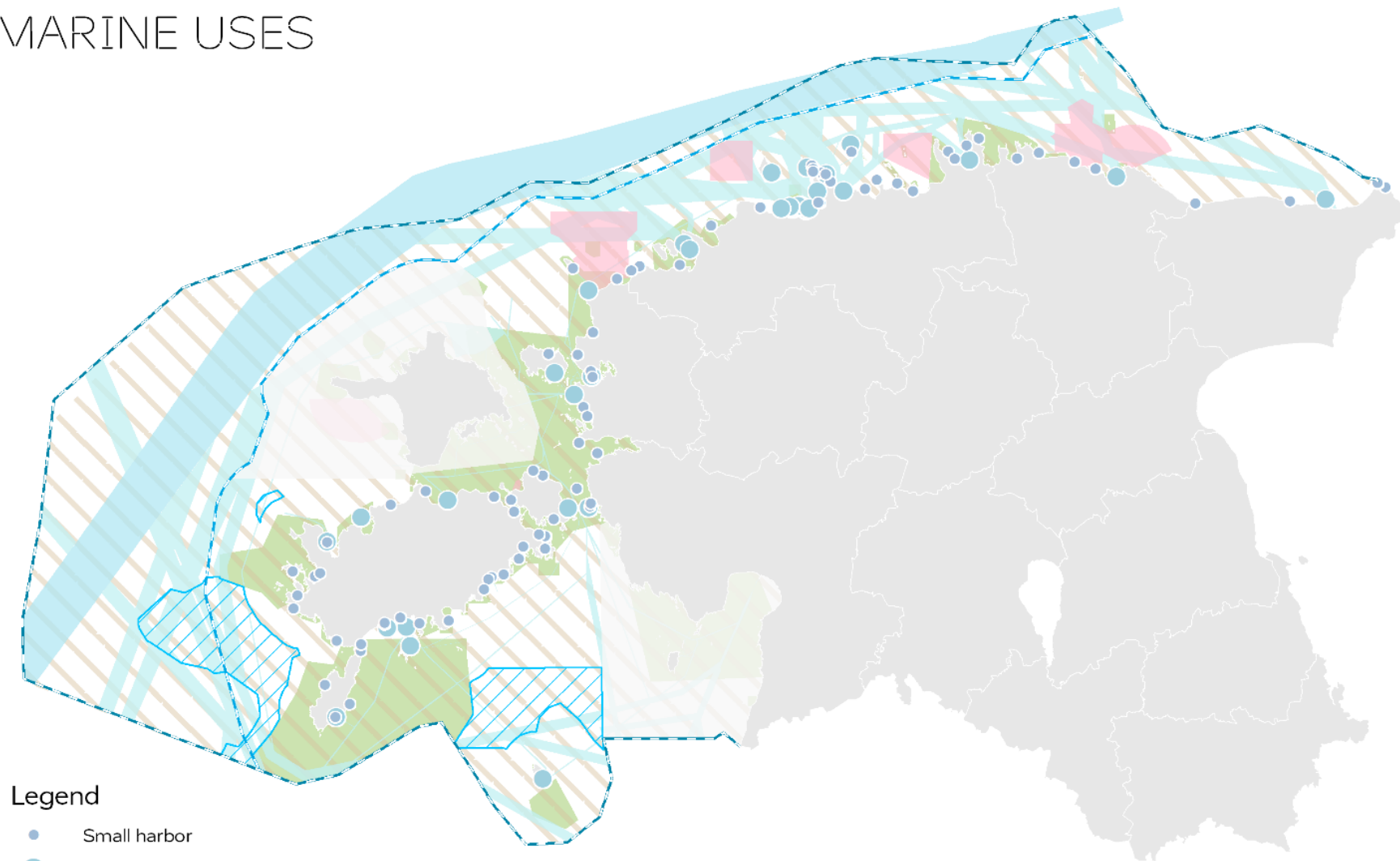
Focus of the MSP

- Strategical spatial development document at the state level
- The primary focus of the plan is the combined use and new uses of the marine area.
- Environmental considerations and the best available knowledge were used as basis for the preparation of the planning solution.

Main uses – first draft

- Fishing – mostly current status
- Aquaculture – determining conditions not areas
- Marine transport – water traffic areas and fairways
- Energy – determining OWE areas and conditions
- Nature – good environmental status and ecosystem-based approach
- Infrastructure connections – reflect only the needs

MARINE USES



Legend

- Small harbor
- Port
- Water traffic
- International water traffic
- Fishery
- Nature conservation
- National defence
- Wind parks (preliminary)
- Exclusive economic zone
- Territorial sea
- Approved maritime spatial plans for Hiiu and Pärnu counties





REPUBLIC OF ESTONIA
MINISTRY OF FINANCE

Thank you!

Triin Lepland
triin.lepland@fin.ee